

February 11, 2025



ALEXANDRIA MOBILITY INITIATIVE FOR GREATER UTC

Implementation Update

CAMPUS POINT BY ALEXANDRIA

Alexandria Mobility Initiative

For Greater UTC

1. SMART SIGNAL SYNCHRONIZATION
2. CAMPUS SHUTTLE
3. TRANSIT CONNECTION
4. SECONDARY ACCESS
5. EXTEND I-5 STORAGE LANES



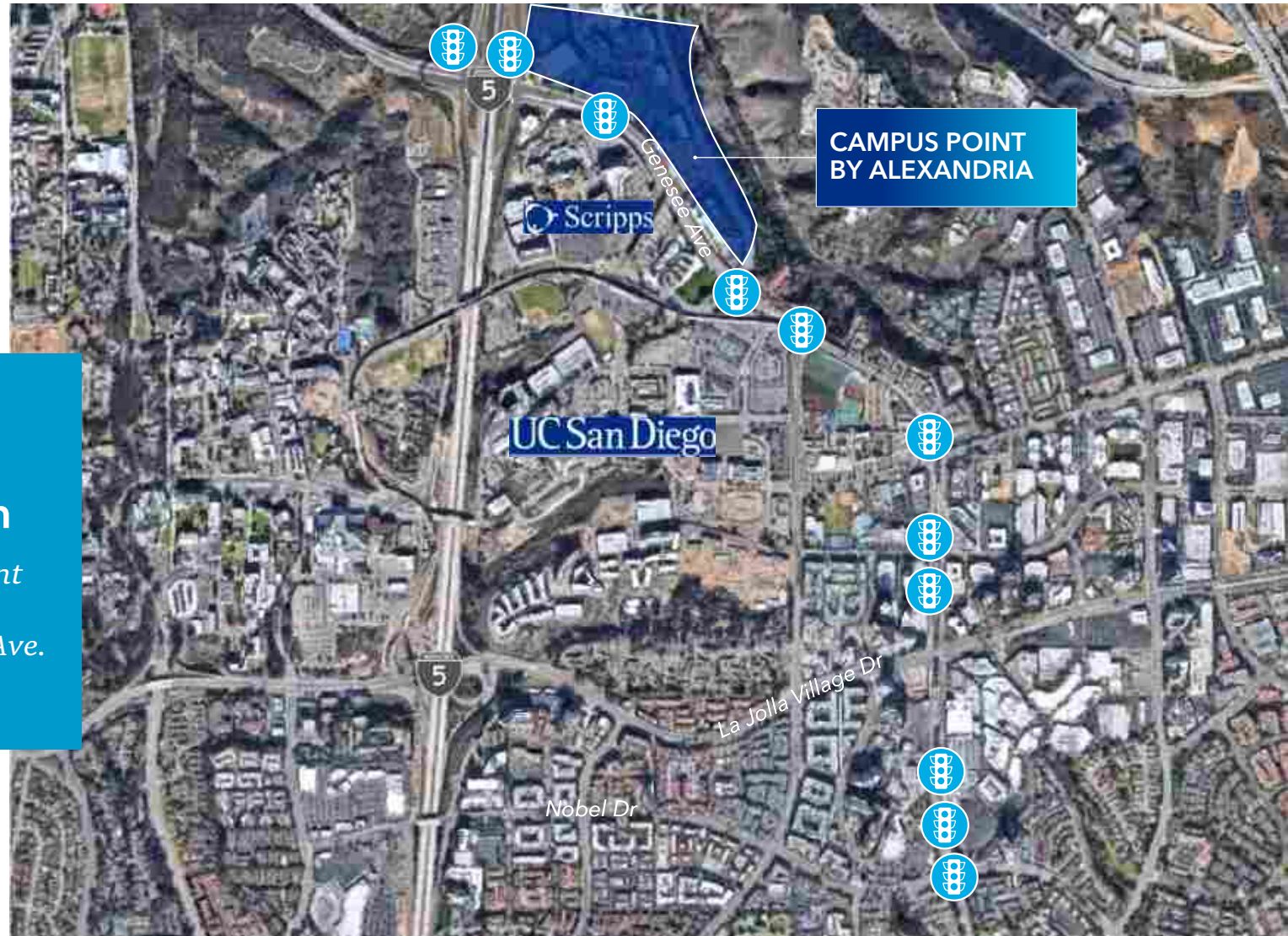
CAMPUS POINT BY ALEXANDRIA

Alexandria Mobility Initiative

For Greater UTC

1 Smart Signal Synchronization

*Prioritize and implement
adaptive smart traffic
signals along Genesee Ave.*



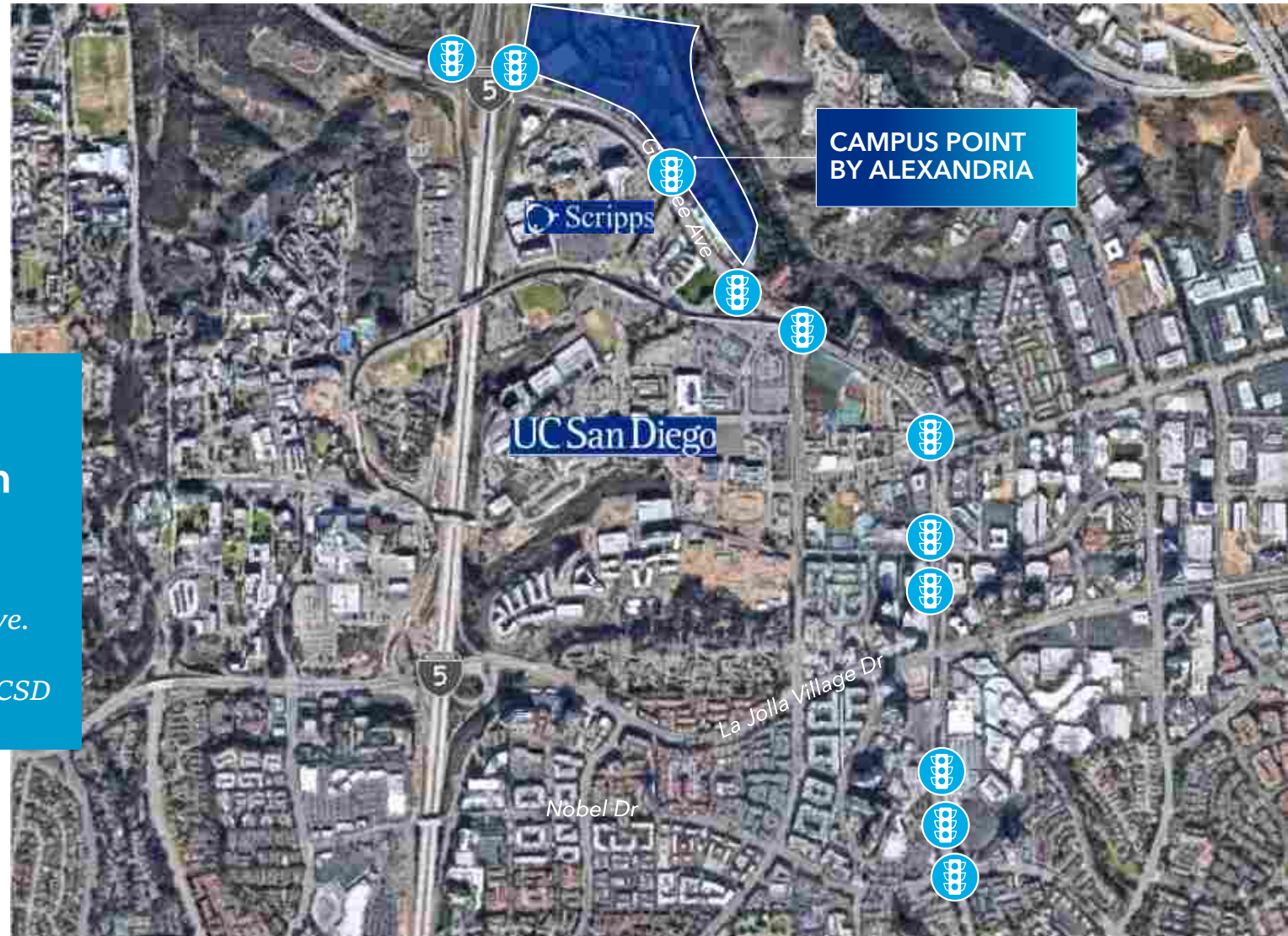
CAMPUS POINT BY ALEXANDRIA

Alexandria Mobility Initiative

For Greater UTC

1 Smart Signal Synchronization - UPDATE

- > Adaptive smart traffic signals along Genesee Ave.
- > Permit ready pending UCSD signal implementation



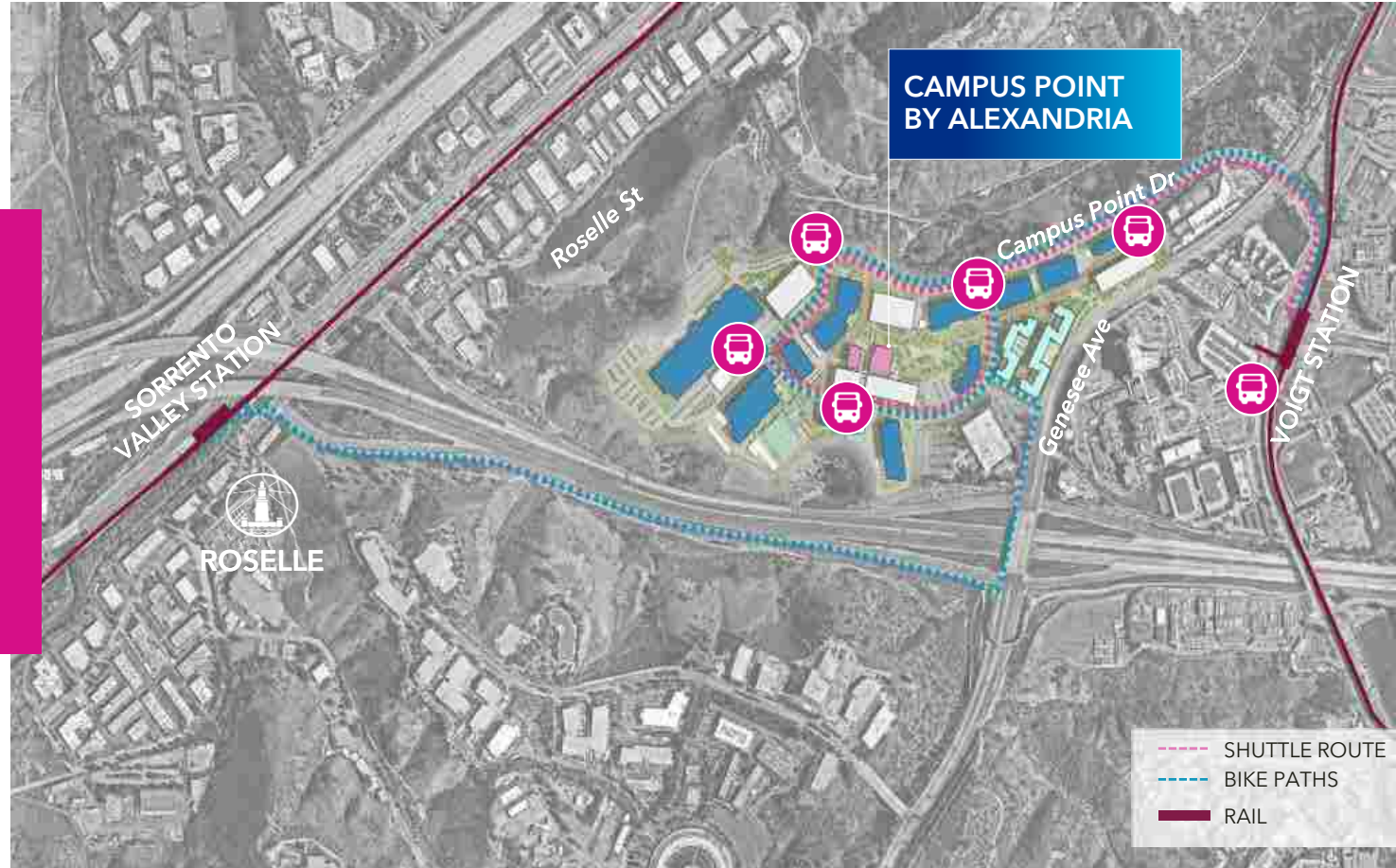
CAMPUS POINT BY ALEXANDRIA

Alexandria Mobility Initiative

For Greater UTC

2 Campus Shuttle

*Connecting job centers
to transit hubs.*



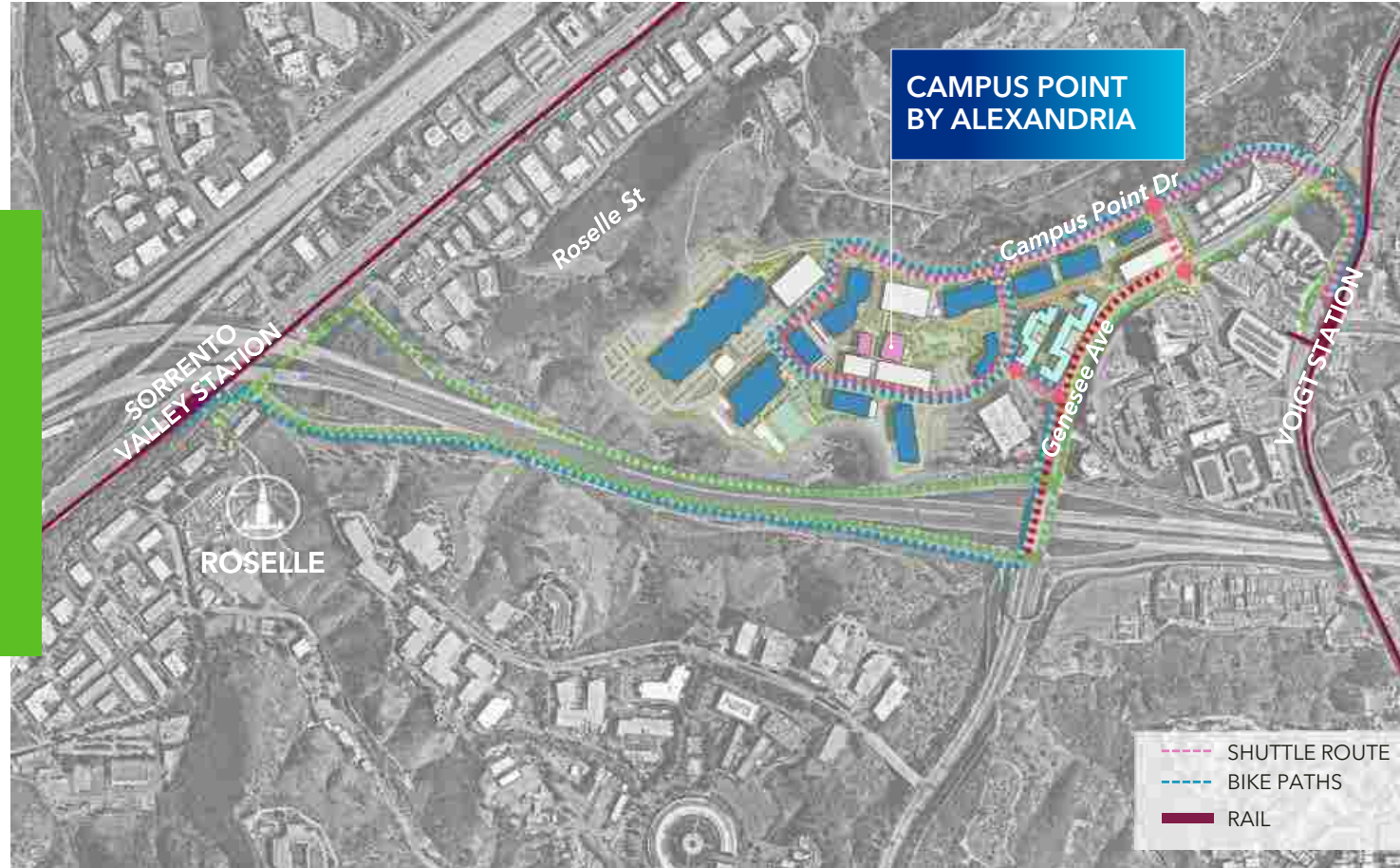
CAMPUS POINT BY ALEXANDRIA

Alexandria Mobility Initiative

For Greater UTC

3 Transit Connection

*Connecting regional
transportation to
job centers.*



CAMPUS POINT BY ALEXANDRIA

Alexandria Mobility Initiative

For Greater UTC

4 Secondary Access

*Using existing
infrastructure to
improve access.*



Alexandria Mobility Initiative

For Greater UTC

4 Secondary Access - UPDATE

*Result of Alexandria
Mobility Initiative,
additional access in
the new UC Plan*



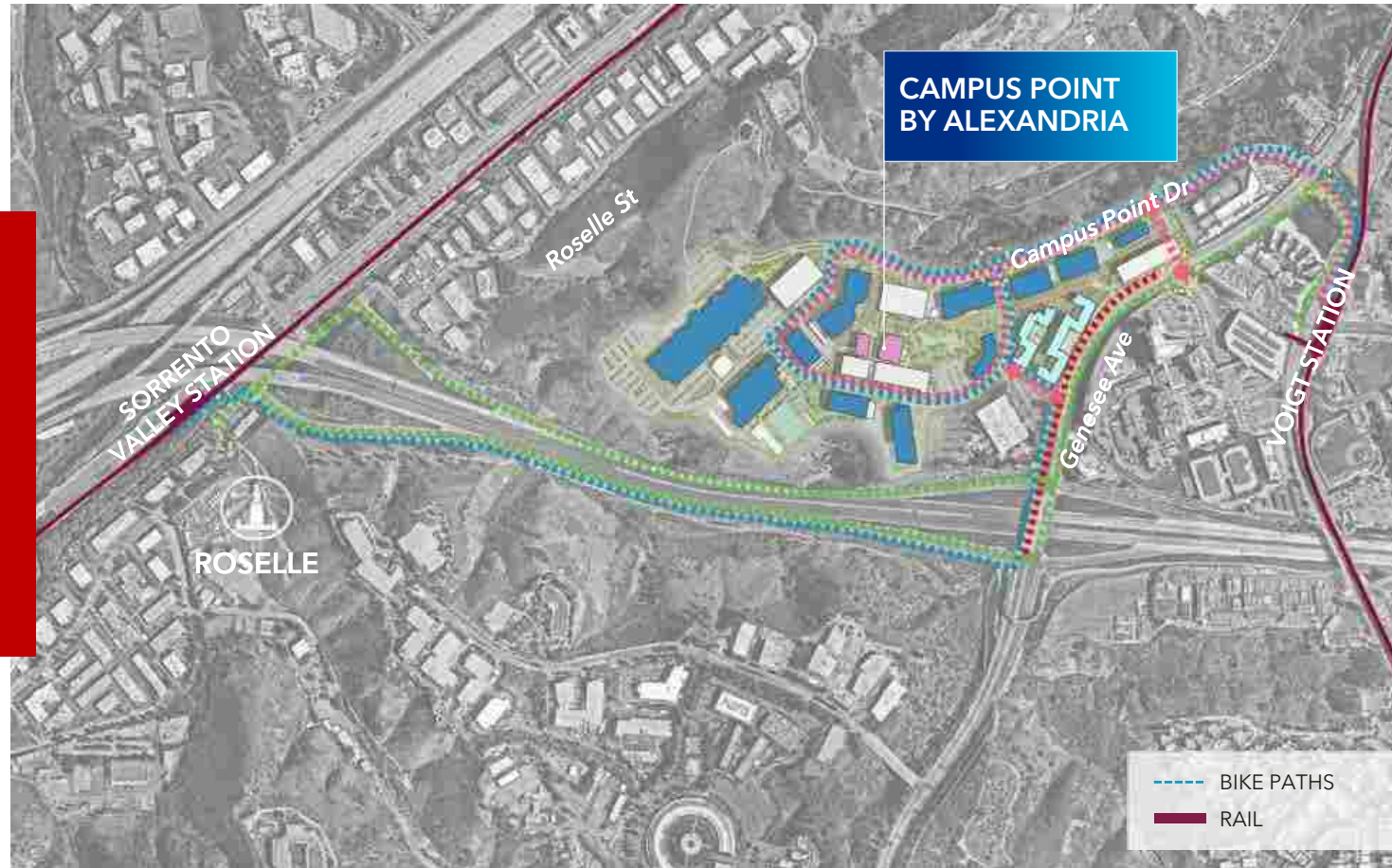
CAMPUS POINT BY ALEXANDRIA

Alexandria Mobility Initiative

For Greater UTC

5 Extend I-5 Storage Lanes








*Improve WB Genesee
flow to La Jolla and
Torrey Pines.*



Alexandria's fire resiliency program at Campus Point

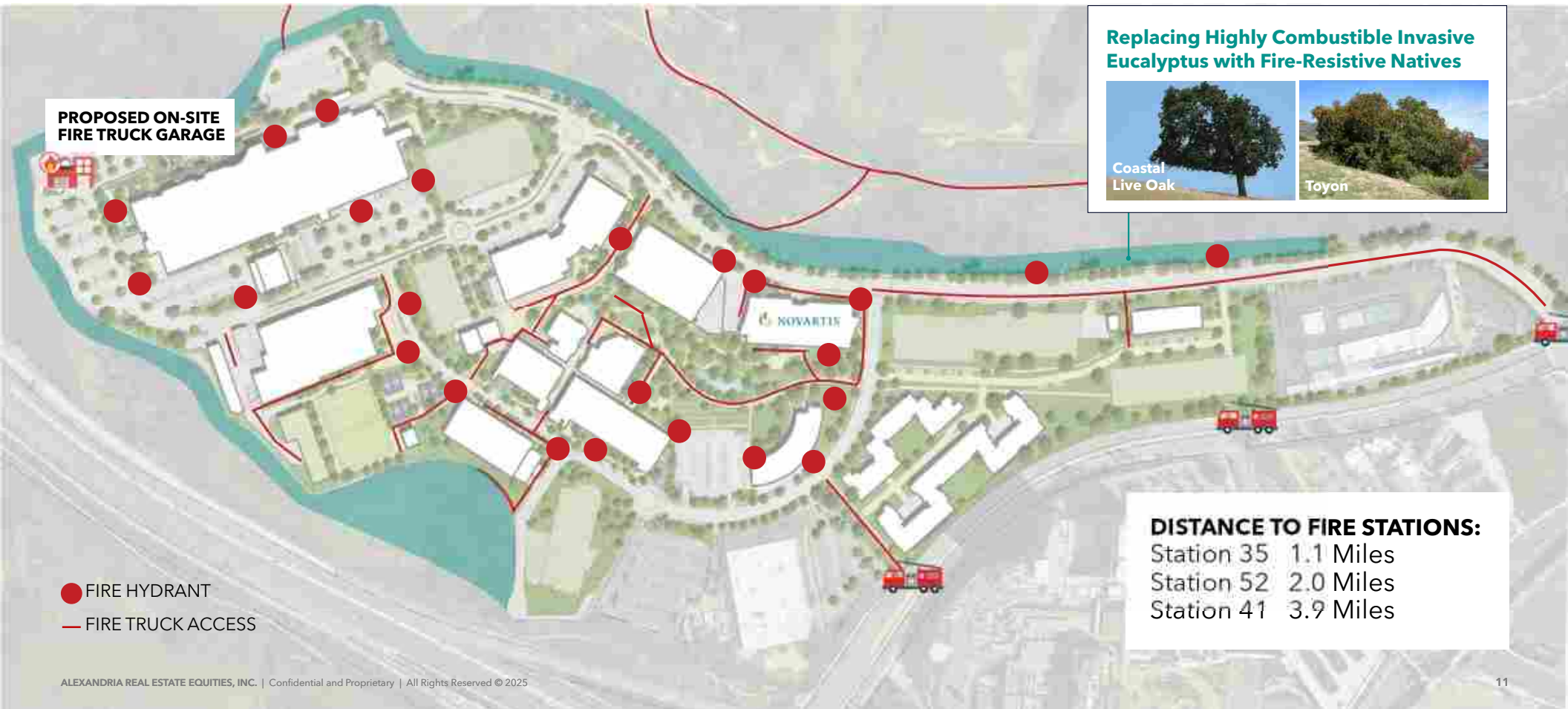
We've been creating a wildfire resiliency program for 5 years with third-party consulting engineers. After the recent Los Angeles wildfires, where some of our own employees were impacted, **the effort is now personal.**

FIRE RESILIENCY MEASURES

-  Landscaping modifications
-  Emergency response communications
-  Emergency response program and SOPs
-  Irrigation lines for brushfire
-  Firewater storage
-  Additional egress routes
-  On-campus firefighting



Alexandria's fire resiliency program at Campus Point



February 11, 2025



ALEXANDRIA MOBILITY INITIATIVE:

Implementation Update

CAMPUS POINT BY ALEXANDRIA

